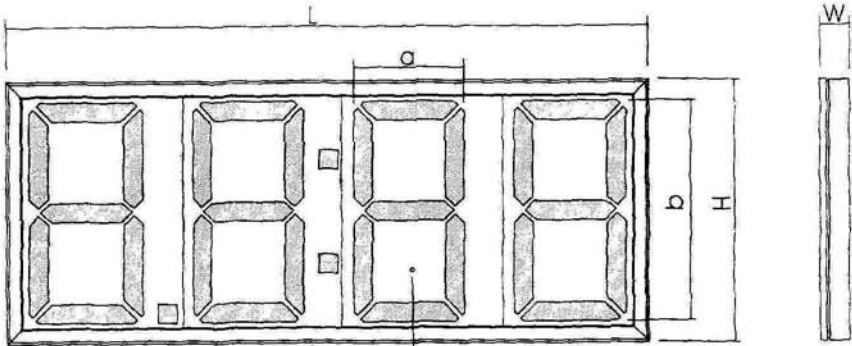


LIT, JAS & P. ON PRICE & CLOCK BOARD

MODEL: AM031410050
AM031410060

PRODUCT SPECIFICATION



SIZE: AM031410050 (18")

LIGHT SENSOR

COLOR:

- (out size: LxWxH=1358x61x550mm)
a=236mm b=462mm
- N.W.: 8KG

- RED
- AMBER

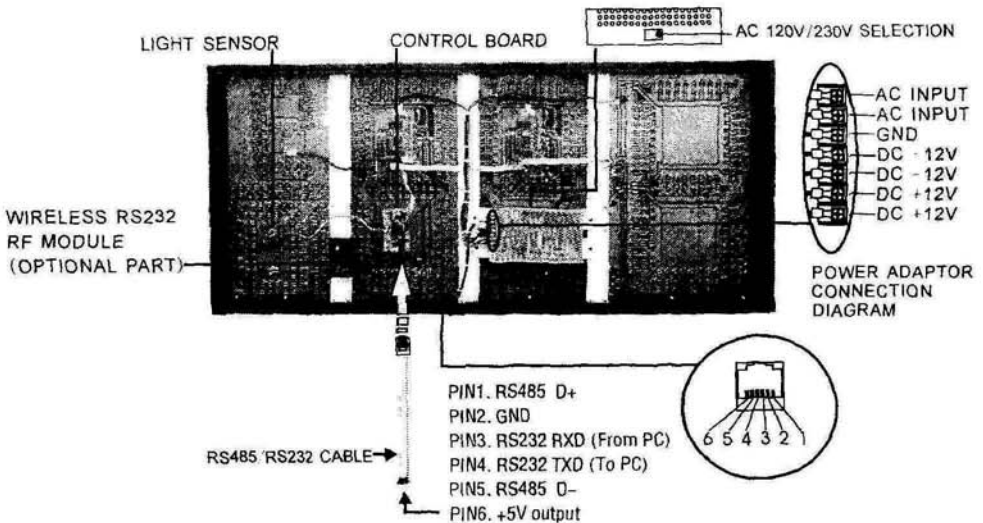
SIZE: AM031410060 (12")

- (out size: LxWxH=1010x61x390mm)
a=161mm b=84mm
- N.W.: 6KG

ACCESSORIES:

- Program CD
- Data RS485 RS232 CABLE
- Mounting bracket

FRONT



DATA CABLE CONNECTION DIAGRAM

REAR

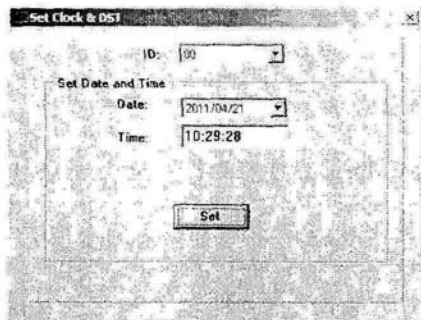
1. Connect data cable to the sign
2. Select COM port
3. Select ID no.
4. Type a 4 digit #. Example: 8.880
5. Press Ok to send

CHANGE BRIGHTNESS

1. Select Brightness in Function manual
 2. Change percentage or automatic
 3. Press ok to send
- * There are 4 manual level and 2 auto level

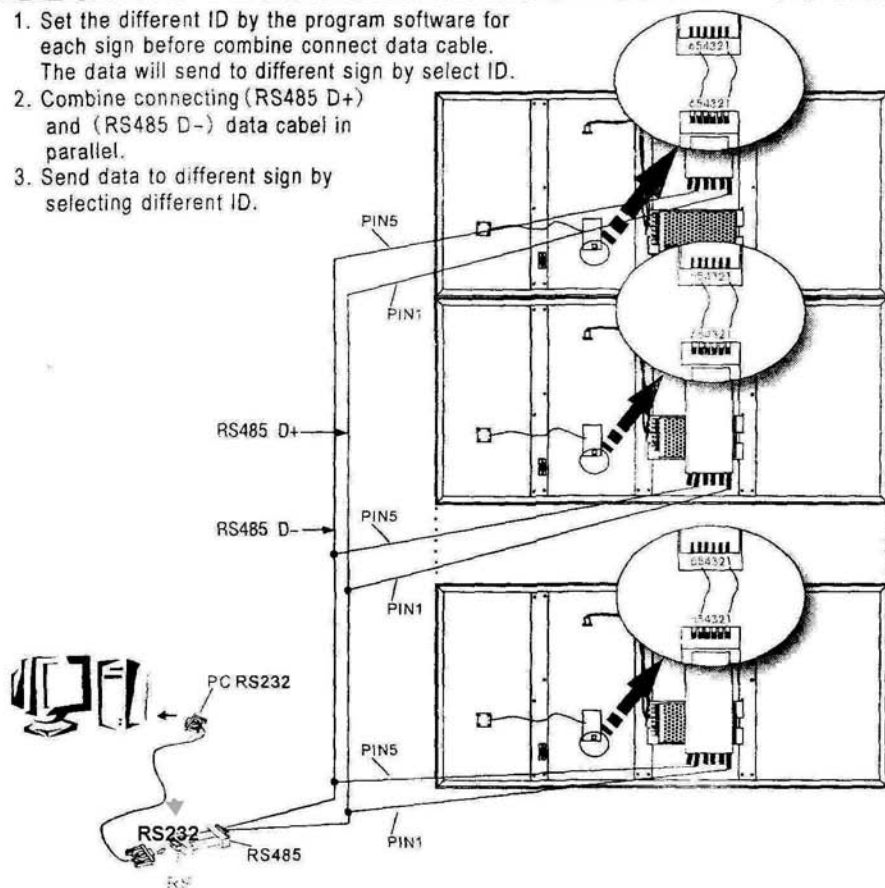
SET CLOCK & DAYLIGHT SAVING TIME

1. Select Set Clock... from Function menu.
2. Select proper ID
3. Press Set to send the Clock



CONNECTING MULTI LINE SIGN WITH RS485 CABLE

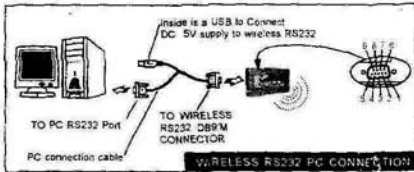
1. Set the different ID by the program software for each sign before combine connect data cable. The data will send to different sign by select ID.
2. Combine connecting (RS485 D+) and (RS485 D-) data cable in parallel.
3. Send data to different sign by selecting different ID.



1. One by one to set the different ID by the program software for each sign. The data will send to different sign by select ID.

2. Connect all wireless RS232 modular. be sure the power should turn off when connect the wireless RS232 modular.

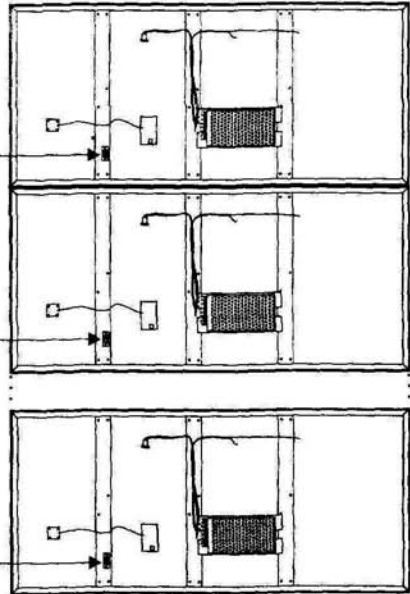
3. Send data to different sign by selecting different ID.



WIRELESS RS232 (1)

WIRELESS RS232 (2)

WIRELESS RS232 (3)

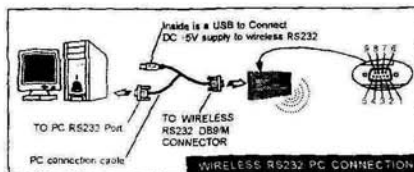


NO RETURN ACK RESPONSE WIRELESS RS232 CONNECTING MULTI LINE SIGN

1. One by one to set the different ID by program software for each sign. The data will send to different sign by select ID.

2. Connect the wireless RS232 modular into one of the sign. Combine connecting (PIN2 GND) and (PIN3 RS232 RX) data cable in parallel.

3. Send data to different sign by selecting different ID.



WIRELESS RS232

PIN3

PIN2

GND

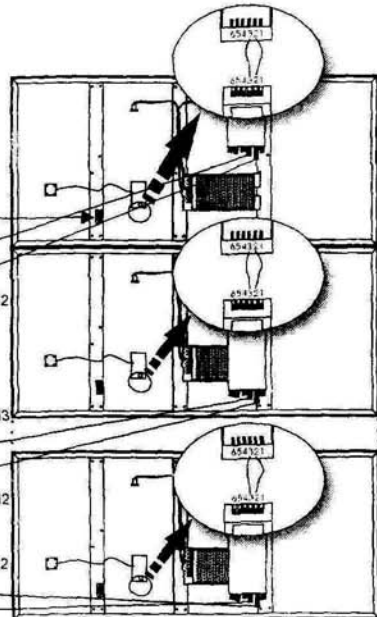
RS232 RXD

PIN3

PIN2

PIN2

PIN3



Display Price

Display Clock

Typ: AM031410050 (18") oder AM031410060 (12")

Procoll

1. SET ID: <ID><XX><E>
{ID no. will be shown during
Power on} Return ACKXX
2. Keep Alive: <IDXX><QA>[CS]<E>
Return ACKXX
3. Send Number: <IDXX><L1>NNNN[CSI]<E>
NNNN = 0000 - 9999
4. Set Brightness: <IDxx><Bn>[cs]<E>
n: Bright level in the range of ASCII
character (A-E)
A:= 100%, B= 75%
C:= 50%, D= 25%
E= Automatic
5. Set Clock <IDxx><SC>YYWWMDDHHmmss[cs]<E>
YY-year, WW-day of week, MM-Month
DD-day, HH-hour, mm-minute, ss-second
[cs]- Checksum, Xor all except ID and ending code.

www.led-laufschriften.de

Siegfried Behrend
Erfurterstraße 17-35039 Marburg
Tel.05681 6185 Mobil 0171 7724187
Fax 05681 609189
E-Mail:behrend-automaten@t-online.de